

Engine M800

Overview

Chip

Impinj M830

EPC

128bits

USER

Null

Antenna Dimensions

44*28mm

Frequency Band

860MHz-960MHz

International Standard

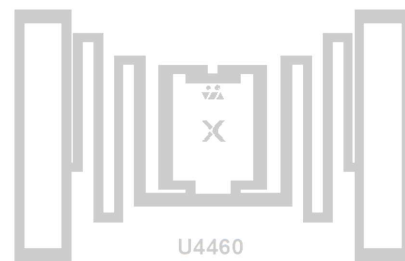
ISO/IEC 18000-63:2015 and EPC global Gen2v2

Industry Segments

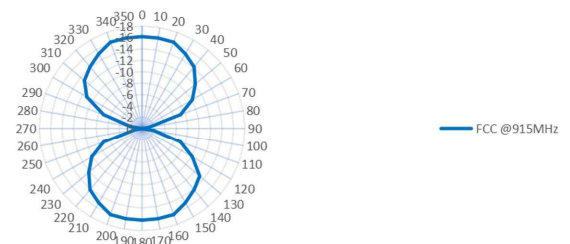
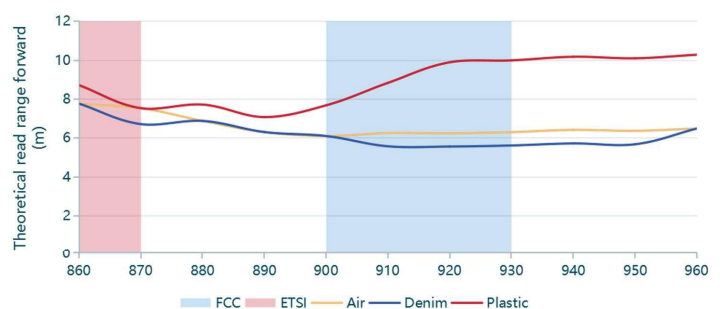
Apparel

Applications

Anti-Counterfeiting Traceability



Engine M800 is equipped with Impinj M830 chip and is a tag specially designed for the clothing industry. EPC Global C1 Gen2 and ISO18000-6C compliant UHF RFID inlay is ideal for retail items such as apparel and home furnishings, and integrates well into supply chain, inventory management and logistics applications. The excellent performance of the Engine series in the paper antenna version is still stable.



Address

Building No. 6, Xindec Industrial Park, No. 2-16 Hongxi South Road, Xiang'an District, Xiamen, 361101, China

Lot 28, Jalan Permata 1/1, Arab Malaysia Industrial Park, 71800 Nilai, Negeri Sembilan

Contact

Email sales@xindecot.com

Web www.xindecot.com



Technical features

	Dry	Wet	Paper-face
Product Code	CTU44601-519D	CTU44601-519W	CTU44601-519L
Antenna Size	44*28mm 1.73*1.10in	44*28mm 1.73*1.10in	44*28mm 1.73*1.10in
Finish Size	- -	47*31mm 1.85*1.22in	47*31mm 1.85*1.22in
Web Width	60mm 2.36in	53mm 2.09in	53mm 2.09in
Pitch	34.66mm 1.36in	34.66mm 1.36in	34.66mm 1.36in
Antenna Material	Aluminium	Aluminium	Aluminium
Front Face	-	PET Clear/PET White/Paper	Paper
Inlay Substrate	PET Clear/PET White/Paper	PET Clear/PET White/Paper	PET Clear/Paper
Inlay Adhesive	-	Permanent	Permanent
Liner	-	Paper	Paper
Operating Temperature	-20°C/50°C -4°F/+122°F	-20°C/50°C -4°F/+122°F	-20°C/50°C -4°F/+122°F
Shelf Life Time	@20% to 80% RH 2/2/1 years @+25°C/40%RH	@20% to 80% RH 1 years @+25°C/40%RH	@20% to 80% RH 1 years @+25°C/40%RH
Inlays/Roll	12000pcs	3000pcs	3000pcs
Final Inspection	100% tested	100% tested	100% tested