

VersaMini U9

Overview

Chip

UCODE 9 (U9)

EPC

96bits

USER

Null

Antenna Dimensions

38*18mm

Frequency Band

902MHz-928MHz

International Standard

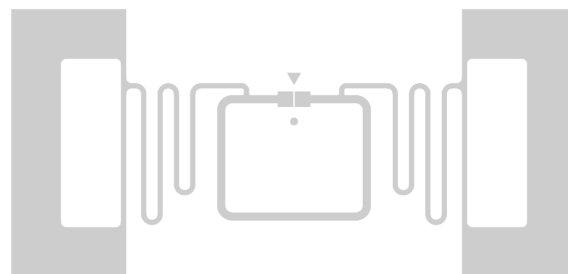
EPCglobal C1 Gen2 and ISO18000-6C

Industry Segments

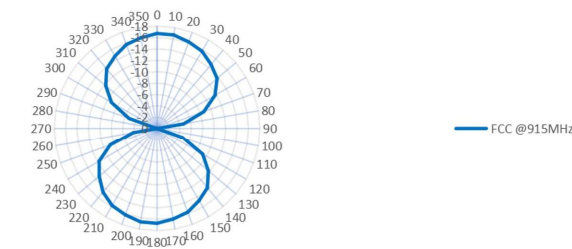
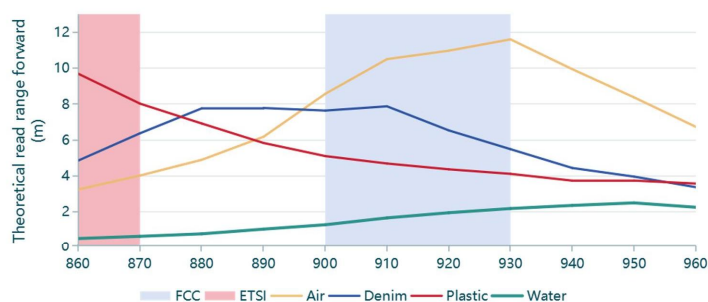
Retail

Applications

Store Inventory



VersaMini U9 features the NXP U9 series chip. The "cutting performance retention" antenna design technology allows the same inlay to be adapted for labels ranging from 33-38mm in length and 13-18mm in width. It can not only be used as a normal label or liquid label, but also can be made into a flag suitable for metal packaging and a hanging label on jewelry through a deformed packaging design.



Address

Building No. 6, Xindeco Industrial Park, No. 2-16 Hongxi South Road, Xiang'an District, Xiamen, 361101, China

Lot 28, Jalan Permata 1/1, Arab Malaysia Industrial Park, 71800 Nilai, Negeri Sembilan

Contact

Email sales@xindecoiot.com

Web www.xindecoiot.com



Technical features

	Dry	Wet	Paper-face
Product Code	CTU44501-485D	CTU44501-485W	CTU44501-485L
Antenna Size	38*18mm 1.50*0.71in	35*15mm (Antenna cutted) 1.38*0.59in	35*15mm (Antenna cutted) 1.38*0.59in
Finish Size	- -	35*15mm 1.38*0.59in	35*15mm 1.38*0.59in
Web Width	50mm 1.97in	41mm 1.61in	41mm 1.61in
Pitch	25.4mm 1.00in	25.4mm 1.00in	25.4mm 1.00in
Antenna Material	Aluminium	Aluminium	Aluminium
Front Face	-	PET Clear/PET White/Paper	Paper
Inlay Substrate	PET Clear/PET White/Paper	PET Clear/PET White/Paper	PET Clear/Paper
Inlay Adhesive	-	Permanent	Permanent
Liner	-	Paper	Paper
Operating Temperrature	-20℃/50℃ -4°F/+122°F	-20℃/50℃ -4°F/+122°F	-20℃/50℃ -4°F/+122°F
Shelf Life Time	@20% to 80% RH 2/2/1 years @+25℃/40%RH	@20% to 80% RH 1 years @+25℃/40%RH	@20% to 80% RH 1 years @+25℃/40%RH
Inlays/Roll	17000pcs	21000pcs	4500pcs
Rolls/Box	6	6	8

Technical features

	Dry	Wet	Paper-face
Inlays/Box	102000pcs	126000pcs	36000pcs
Box Size	240*240*365mm 9.45*9.45*14.37in	290*290*365mm 11.42*11.42*14.37in	360*360*285mm 14.17*14.17*11.22in
Box Gross Weight	11.5kg	20kg	7kg
Final Inspection	100% tested	100% tested	100% tested