

CTU39301-519

Overview

Chip

Impinj M830

EPC

128bits

USER

Null

Antenna Dimensions

53*19mm

Frequency Band

860MHz-960MHz

International Standard

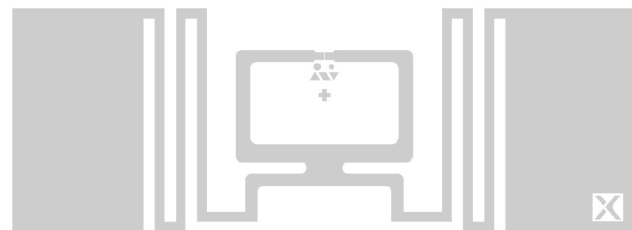
ISO/IEC 18000-63:2015 and EPC global Gen2v2

Industry Segments

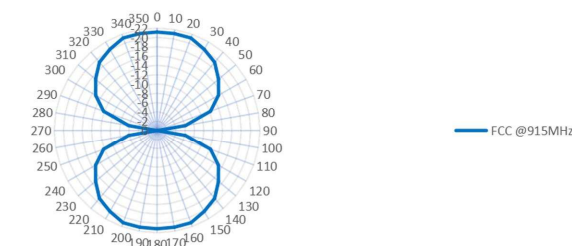
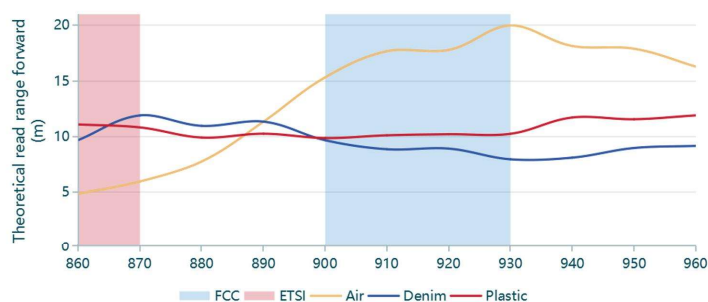
Apparel 、 Logistic

Applications

Store Inventory、 Warehouse Management



CTU39301-519 inlays are used to manage a wide range of retail goods, especially apparel, logistics and pharmaceutical-related applications. The size of the inlay antenna is 53*19mm, and it has good performance in all frequency bands (860-960 MHz), and works stably on various objects (non-metal & liquid). CTU39301-519 is equipped with Impinj's M830 chip, which is equipped with 128-bit EPC memory and 96-bit TID, and is delivered in wet inlay, dry inlay, and sticker formats.



Address

Building No. 6, Xindeco Industrial Park, No. 2-16 Hongxi South Road, Xiang'an District, Xiamen, 361101, China

Lot 28, Jalan Permata 1/1, Arab Malaysia Industrial Park, 71800 Nilai, Negeri Sembilan

Contact

Email sales@xindecoiot.com

Web www.xindecoiot.com



Technical features

	Dry	Wet	Paper-face
Product Code	CTU39301-519D	CTU39301-519W	CTU39301-519L
Antenna Size	53*19mm 2.09*0.75in	53*19mm 2.09*0.75in	53*19mm 2.09*0.75in
Finish Size	- -	56*22mm 2.20*0.87in	56*22mm 2.20*0.87in
Web Width	68mm 2.68in	62mm 2.44in	62mm 2.44in
Pitch	25.4mm 1.00in	25.4mm 1.00in	25.4mm 1.00in
Antenna Material	Aluminium	Aluminium	Aluminium
Front Face	-	PET Clear/PET White/Paper	Paper
Inlay Substrate	PET Clear/PET White/Paper	PET Clear/PET White/Paper	PET Clear/Paper
Inlay Adhesive	-	Permanent	Permanent
Liner	-	Paper	Paper
Operating Temperature	-20°C/50°C -4°F/+122°F	-20°C/50°C -4°F/+122°F	-20°C/50°C -4°F/+122°F
Shelf Life Time	@20% to 80% RH 2/2/1 years @+25°C/40%RH	@20% to 80% RH 1 years @+25°C/40%RH	@20% to 80% RH 1 years @+25°C/40%RH
Inlays/Roll	17000pcs	4000pcs	4000pcs
Final Insperction	100% tested	100% tested	100% tested