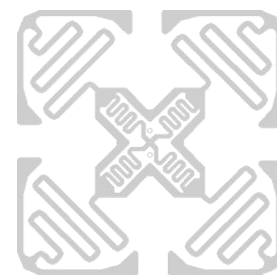


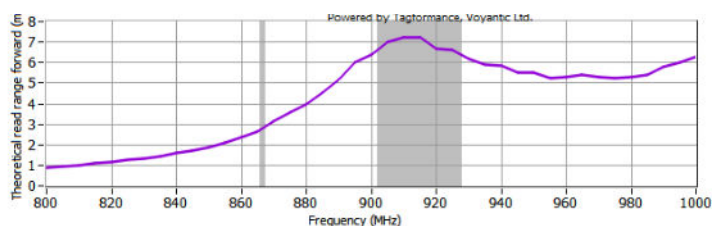
# UHF

## CTU06101-454

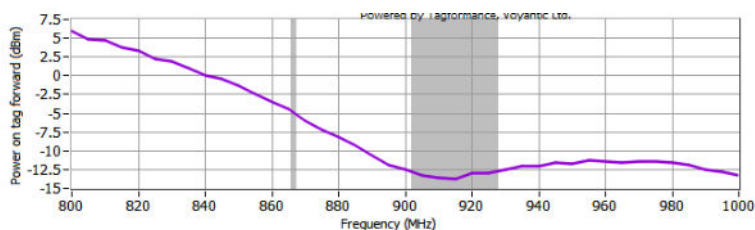


### GENERAL SPECIFICATION

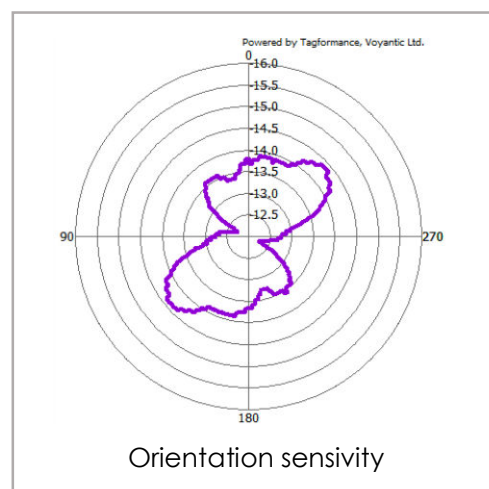
<b>Applications</b>	Asset Management & Logisticst
<b>IC</b>	IMPINJ 4E
<b>Frequency</b>	902 MHz-928 MHz
<b>Protocol</b>	ISO18000-6C EPC Class1 Gen2
<b>User memory</b>	128 Bits
<b>EPC memory</b>	496 Bits
<b>Antenna size</b>	44x44 mm
<b>Tag size</b>	50x50 mm
<b>Pitch</b>	52.388 ± 0.5 mm
<b>Core inner diameter</b>	76 ± 0.5 mm
<b>Storage Temperature</b>	20°C ~30°C /20%~60% RH
<b>Operating Temperature</b>	20°C ~30°C /20%~60% RH
<b>Standard roll qty</b>	5000 - 20000 pcs
<b>Antenna Process Mode</b>	Aluminum Etching



Read Range



Sensitivity Results from Free Space(dBm)



Orientation sensitivity

