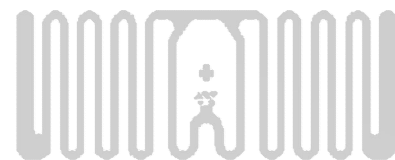


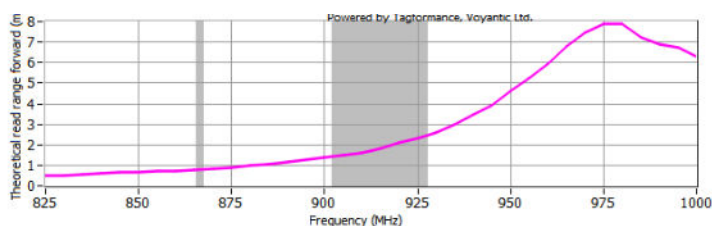
# UHF

## CTU23801-495

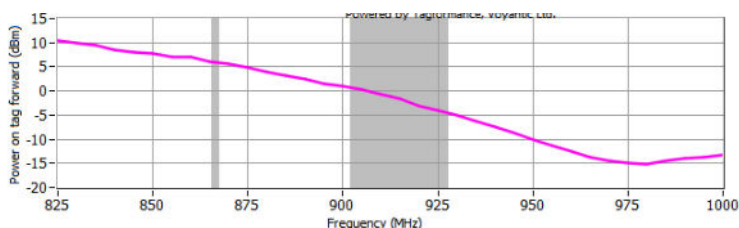


### GENERAL SPECIFICATION

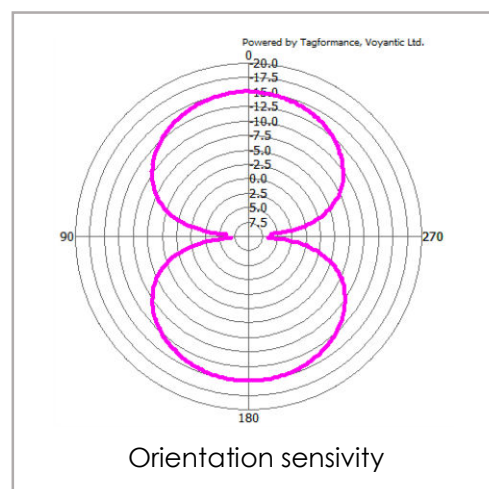
<b>Applications</b>	Apparel
<b>IC</b>	MW8112
<b>Frequency</b>	Global 860-960 MHz
<b>Protocol</b>	ISO18000-6C EPC Class1 Gen2
<b>User memory</b>	32/0 Bits
<b>EPC memory</b>	96/128 Bits
<b>Antenna size</b>	50x30 mm
<b>Tag size</b>	/
<b>Pitch</b>	22.225 ± 0.5mm
<b>Core inner diameter</b>	76 ± 0.5mm
<b>Storage Temperature</b>	-25°C ~ 50°C / 20%~80% RH
<b>Operating Temperature</b>	-40°C ~ 70°C / 20%~80% RH
<b>Standard roll qty</b>	5000 - 20000pcs
<b>Antenna Process Mode</b>	Aluminum Etching



Read Range



Sensitivity Results from Free Space(dBm)



Orientation sensitivity

